

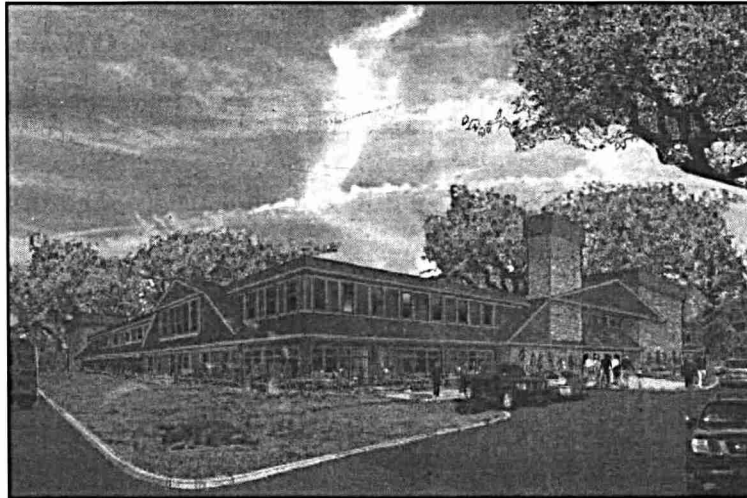
## Evesham, NJ Medical center undergoes renovation **BIG SKY Enterprises** assists **The Tuckerton Group**

**E**VESHAM, NJ — According to BIG SKY Enterprises, the new Tuckerton Medical building under construction is already garnishing considerable attention. The two-story \$2.75 million medical center boasts 14,000 s/f of office space and an expansive parking lot.

The new Tuckerton Medical facility will replace an older medical building that has been serving the needs of children in the community for almost 40 years.

The Tuckerton Group turned to BIG SKY, a company known for uniquely developing, executing and overseeing the entire project life cycle. The company is serving as builders, consultants, project managers and financial advisors for this highly anticipated behemoth medical building.

BIG SKY assisted The Tuckerton Group in obtaining the best terms possible on the financing that was underway when they were contracted. The company also procured the necessary site plan approval and sewer, MUA and water sewer approvals required for the project to break ground. ■



*Tuckerton Medical building*

